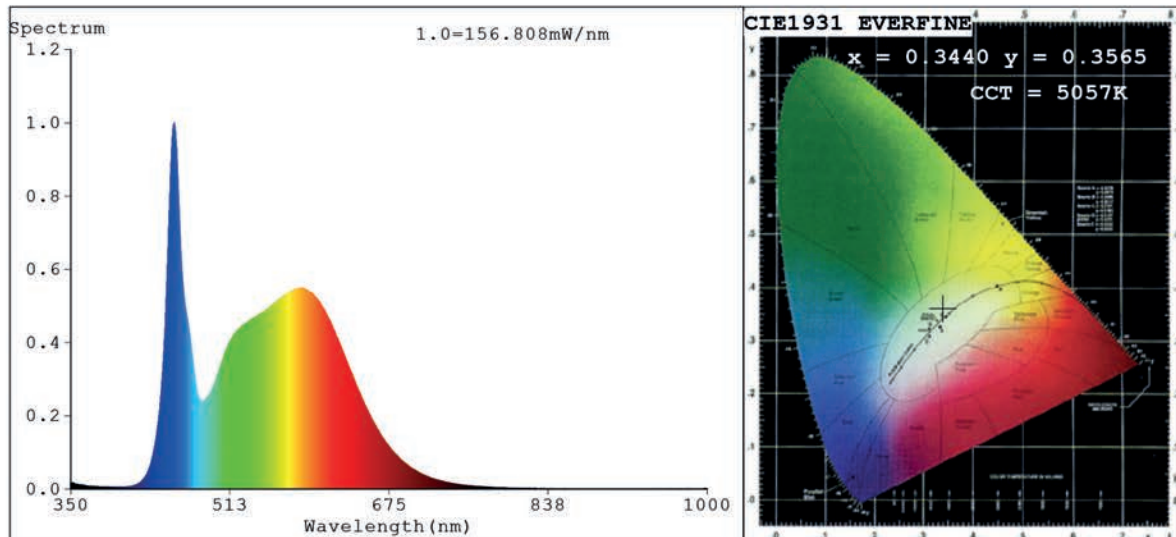


## Spectrum Test Report



### Color Parameters:

Chromaticity Coordinate:  $x=0.3440$   $y=0.3565$   $u'=0.2088$   $v'=0.4869$   
 CCT=5057K (Duv=0.0029) Dominant WL:Ld =569.2nm Purity=10.2%  
 Ratio:R=15.5% G=79.5% B=5.0%; Peak WL:Lp=455.7nm FWHM=19.8nm  
 Render Index:Ra=82.8 CRI=75.9 TM30:Rf=80 Rg=92 Lav=553.0nm  
 R1 =81 R2 =91 R3 =95 R4 =80 R5 =81 R6 =86 R7 =85  
 R8 =64 R9 =3 R10=78 R11=79 R12=59 R13=84 R14=98 R15=75

### Photo Parameters:

Flux = 5318 lm Eff. : 177.04 lm/W Fe = 16.43 W

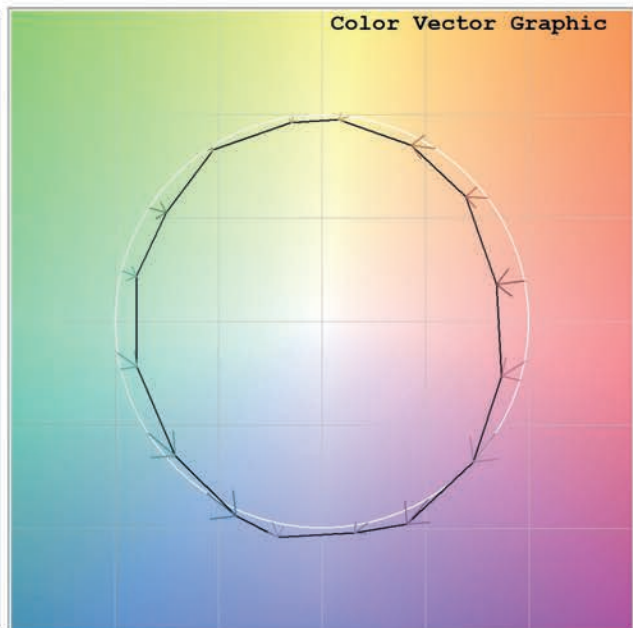
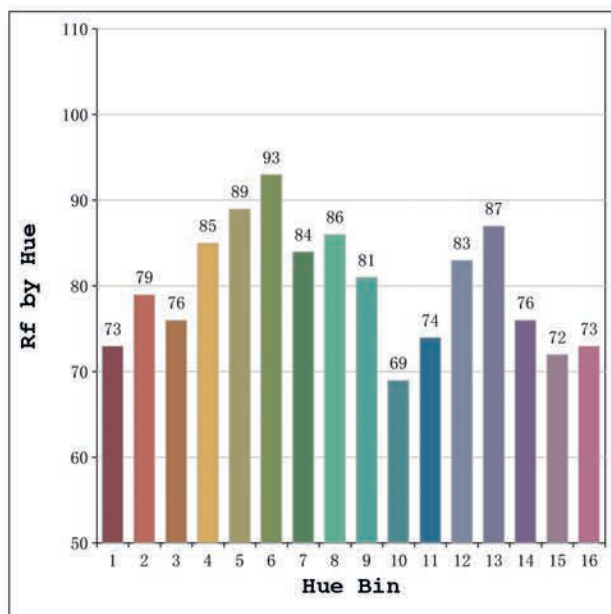
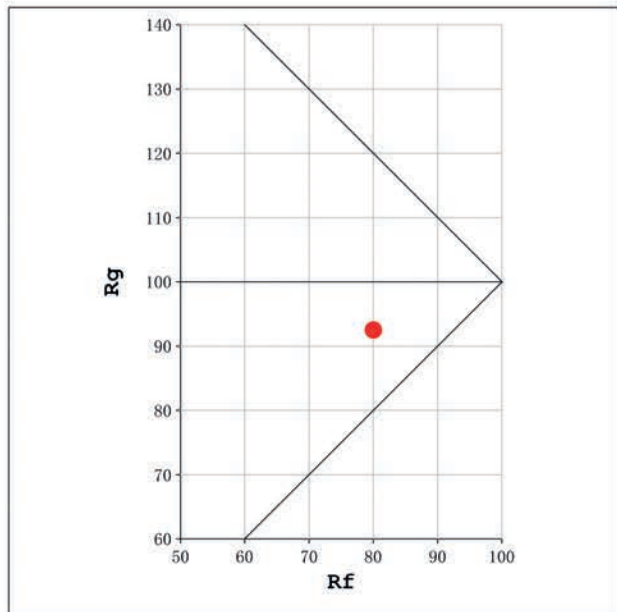
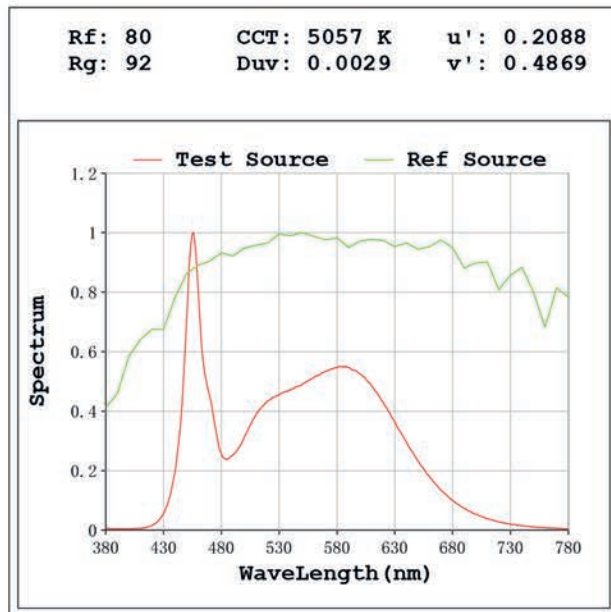
### Electrical parameters:

V = 23.998 V I = 1.252 A P = 30.04 W PF = 1.000

Status: Integral T = 250 ms Ip = 51422 (78%)

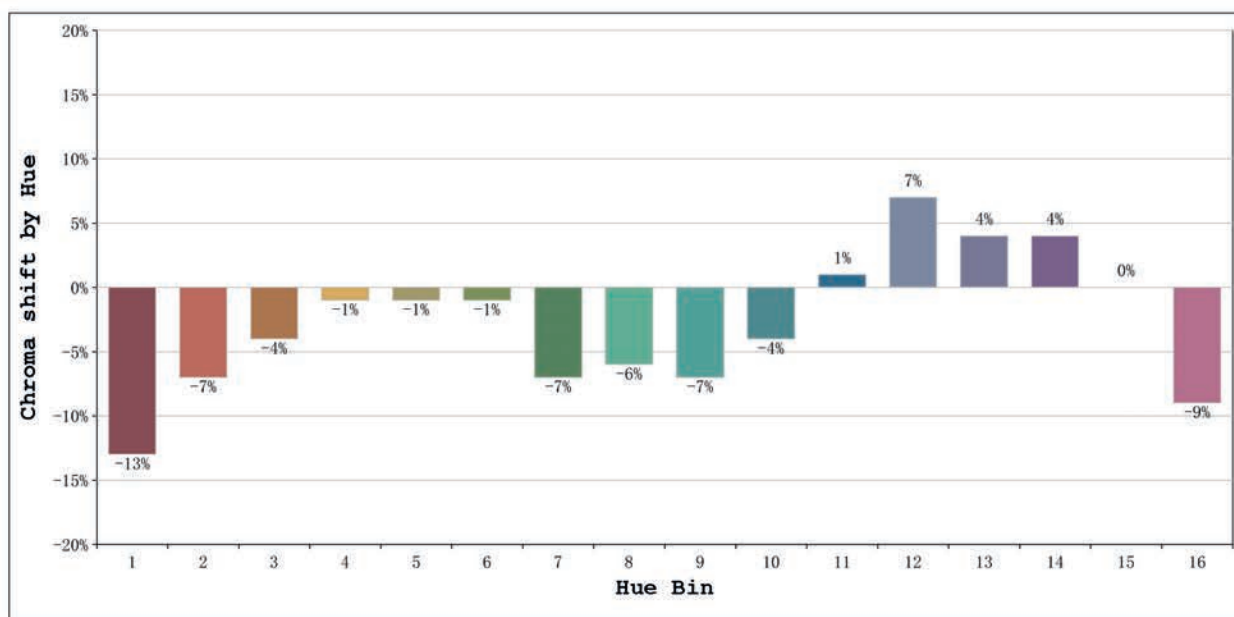
Model:Córdoba High Efficiency  
 Tester:Sergio Carneros  
 Temperature:27Deg  
 Manufacturer:Luz Negra S.L.

Number: 33.209  
 Date:2024-11-21 08:16:54  
 Humidity:35%  
 Remarks:100cm de tira flexible



Model:Córdoba High Efficiency  
 Tester:Sergio Carneros  
 Temperature:27Deg  
 Manufacturer:Luz Negra S.L.

Number: 33.209  
 Date:2024-11-21 08:16:54  
 Humidity:35%  
 Remarks:100cm de tira flexible



			Graphic shift(%)	
Hue Bin	Hue Angle	Rf	Chroma	Hue
1	0.0° - 22.5°	73	-13	1
2	22.5° - 45.0°	79	-7	6
3	45.0° - 67.5°	76	-4	10
4	67.5° - 90.0°	85	-1	5
5	90.0° - 112.5°	89	-1	2
6	112.5° - 135.0°	93	-1	-1
7	135.0° - 157.5°	84	-7	-2
8	157.5° - 180.0°	86	-6	1
9	180.0° - 202.5°	81	-7	8
10	202.5° - 225.0°	69	-4	16
11	225.0° - 247.5°	74	1	18
12	247.5° - 270.0°	83	7	4
13	270.0° - 292.5°	87	4	-6
14	292.5° - 315.0°	76	4	-14
15	315.0° - 337.5°	72	0	-16
16	337.5° - 360.0°	73	-9	-8

Model:Córdoba High Efficiency  
Tester:Sergio Carneros  
Temperature:27Deg  
Manufacturer:Luz Negra S.L.

Number: 33.209  
Date:2024-11-21 08:16:54  
Humidity:35%  
Remarks:100cm de tira flexible